

# Accepted Items

## Brant Landfill

57 Concession 8, Elmwood

**Reminder: Bagged Garbage is accepted in Clear Bags only!**

All waste items, with the exception of hazardous waste, will be accepted at the Brant Landfill. Residents are encouraged to sort the recycling from the waste before visiting the landfill in order to prevent recyclable materials from entering the landfill. Unsorted waste loads, may result in an unsorted waste charge.



## Recycling Programs

The Municipality of Brockton has a number of recycling programs for residents to take advantage of in order to extend the life of the Brockton landfills.

All blue box materials are accepted at the Brant Landfill location: glass jars and bottles, certain plastics, box board, paper and metal cans are accepted. For a full list, visit [brucerecycling.com/what-can-i-recycle](http://brucerecycling.com/what-can-i-recycle).

All accepted blue box materials are free to dispose of.

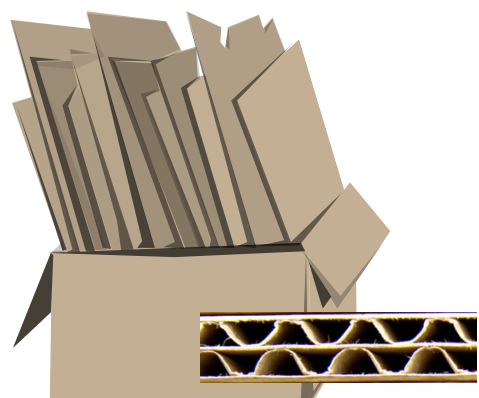
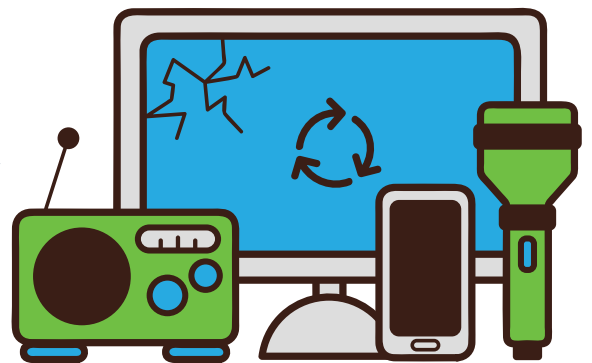


The Brant Landfill has a compost pile that is used for household compost, yard waste and leaf collection. If depositing bagged compost, the only bags that are permitted are the biodegradable Kraft paper waste bags will be accepted. Under no circumstances will plastic bags be accepted. Brush, with branches 3" or less are also accepted. Stumps are not accepted.

All approved compost and brush materials are free to dispose of.

Electronic Waste is accepted at the Brant Landfill. If the product has a plug - or can be plugged in like a cell phone, then the product is accepted as electronic waste. Large appliances like fridges, stoves, laundry pairs, or appliances that contain freon are not considered electronic waste.

Electronic waste is free to dispose of.



Corrugated cardboard is accepted at the Brant Landfill. Flattening and bundling the cardboard is recommended to conserve space. Waxed boxes, box board and packaging cardboard are not accepted. Check for the waves!

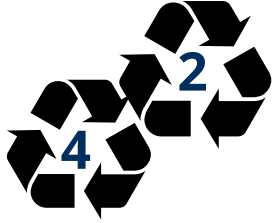
Cardboard is free to dispose of.

### Hours of Operation:

Hours (April - October): Tuesday / Wednesday 9:00am - 3:00pm | Saturday 8:00am - 4:00pm  
Hours (November - March): Wednesday 9:00am - 3:00pm | Saturday 8:00am - 4:00pm



# Recycling Programs



Film plastics, identified with the 2 or 4 recycling symbols are accepted at the Brant Landfill free of charge. This includes: bread and milk bags, dry cleaning bags, bottled water over wrap and more.

Film Plastics are free to dispose of.

The Brant Landfill accepts ten tires per resident per day, tires for cars, wheelbarrows and more are accepted. Tires must not be on rims.

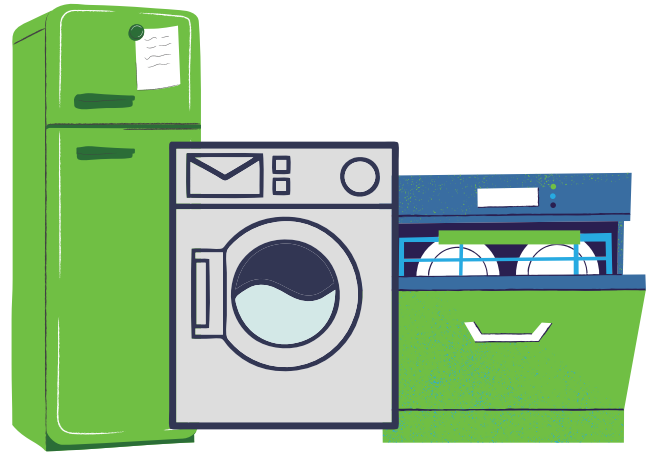
A maximum of ten tires are free to dispose of per resident per day.



Mattresses and box springs of all sizes are accepted at the Brant Landfill.

Mattresses and box springs are accepted at a cost of \$20 per unit.

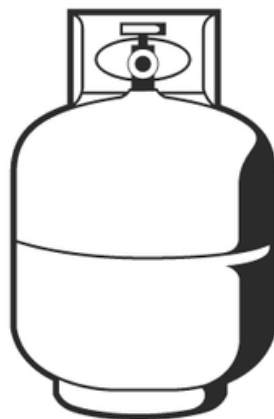
All large appliances are accepted at a cost of \$10 per appliance. Appliances that contain freon are required to have a freon free tag to verify that the freon has been removed.



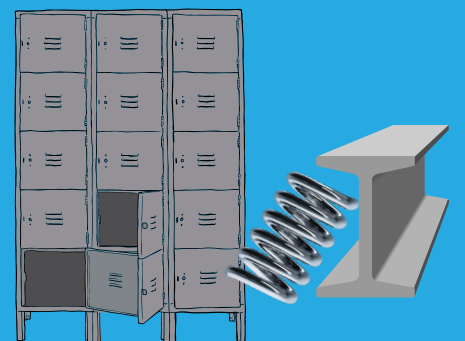
Batteries, including: alkaline and primary, rechargeable, automotive and marine, are recyclable at the Brant Landfill.



Empty propane tanks are accepted at the Brant Landfill at \$5 each unit.



Scrap Metal is accepted at the Brant Landfill free of charge. All Metal or mostly metal items are accepted.



All recycled materials need to be cleaned and free from contaminants before being disposed of.

### Hours of Operation:

Hours (April - October): Tuesday / Wednesday 9:00am - 3:00pm | Saturday 8:00am - 4:00pm  
Hours (November - March): Wednesday 9:00am - 3:00pm | Saturday 8:00am - 4:00pm

Selected items cannot be recycled or disposed of at this location. As such, below are the appropriate locations for disposal / recycling.

Polystyrene or styrofoam is recyclable at the MTO Recycling Yard at 320 Kincardine Highway, Walkerton. As this product is 95% air, the Municipality condenses the product as much as possible, so stickers and tape need to be removed prior to recycling.

Only clean polystyrene will be accepted!



The County of Bruce manages the collection of hazardous waste in the Municipality of Brockton. For more information on collection days and for what is accepted, please visit [brucecounty.on.ca](http://brucecounty.on.ca).



Please be respectful to Brockton Landfill Attendants.

If you have a complaint, please contact the Municipal Office at 519-881-2223, Monday to Friday 8:30-4:30, or visit the office at 100 Scott Street, Walkerton.



# Brant Landfill

Open to Municipality of Brockton residents only

## General Rules

1. Open to Municipality of Brockton residents only
2. Refuse must be sorted as per the attendants direction
3. Only clear bags will be accepted
4. Scavenging and hunting are not permitted
5. No dumping of hazardous waste or hot ashes
6. No stumps
7. Brush no larger than 3"

## Waste Diversion Efforts

The Municipality of Brockton strives to provide more recycling opportunities for residents. Please ensure you are aware of the programs that are available at [brockton.ca/recycling](http://brockton.ca/recycling).

## Hazardous Waste

The County of Bruce manages the collection of hazardous waste in the Municipality of Brockton. For more information on collection days and for what is accepted, please visit [brucecounty.on.ca](http://brucecounty.on.ca).

**No Hazardous Waste  
will be collected at this site**

**Please See Attendant Upon Arrival**